

# ***QwikTouch***

QwikTouch 1.6.0 Update

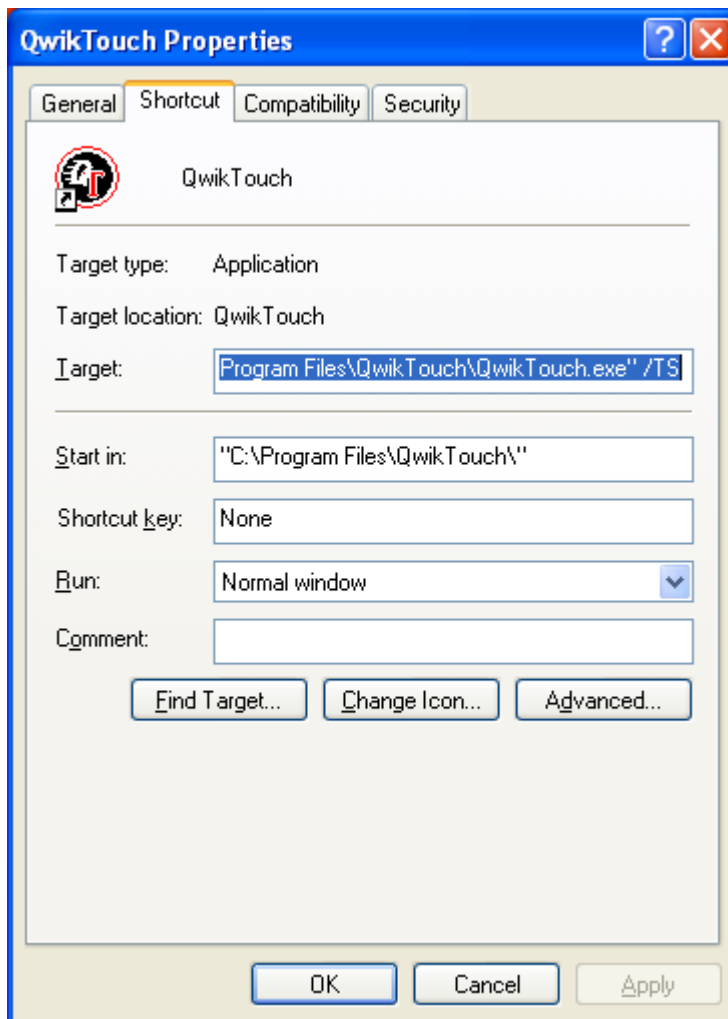


## **New Features**

- Terminal Server Switch
- Global Variables

**Added a /TS switch to allow multiple copies of Qwiktouch to be run simultaneously for Terminal Servers.**

Add /TS to the end of the Target line of the Icon Properties  
"C:\Program Files\QwikTouch\QwikTouch.exe" /TS

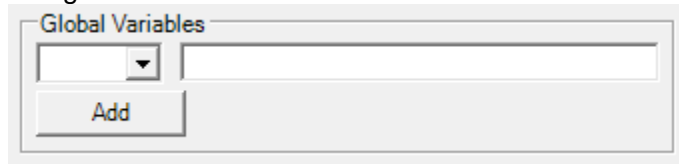


## Added Global Variable Macros

Global variables are used to store and retrieve values that can be used with other Macros or Templates.

### Assigning Global Variables

You assign Global Variables from the "Global Variables" section of the QwikTouch Editor Macro dialog.



Choose the number (1-100) of the Global Variable you want to assign, enter a value for it and choose add.

### Using Global Variables

Use GV Syntax -  
{GV#}

The Global Variable can be used anywhere except "Change Program" (Pro Only) and "Launch Program"

So for e.g. -

Set GV1 = "1024x768Standard\_QWERTY"

You can then:

"SK-**{GV1}**"

Sends - "1024x768Standard\_QWERTY" to Keystroke, typing it out on the

current line

"ST-**{GV1}**"

Switch to the "1024x768Standard\_QWERTY" Template

"SM-**{GV1}**"

Opens a Message Box with "1024x768Standard\_QWERTY"

Note - the **{GV#}** must be the only macro on the line

If you set GV1="BLUE", and you want to send "BLUE + **{ENTER}**" to Keystrokes, you must

SK-**{GV1}**

SK-**{ENTER}**

!NOT!

SK-**{GV1}{ENTER}**

**An example of using Global Variables would be when working with Matrix Inventory Items.**

The Keystroke Tutor Data for example has an Inventory Item for a “Shirt – Polo Style”.

The stock number for the shirt is 1, but there are also sizes and colors to choose from (Small, Medium, Large, Denim, Black, Green etc...).

**You could create 1 QwikTouch Inventory Key for each item –**

Polo, Small, Green

SK-1.SG

Polo, Small, Black

SK-1.SK

Polo, Small, Denim

SK-1.SD

Polo, Medium, Green

SK-1.MG

Etc...

**Or you could use Global Variables –**

Polo

SV1=1

This sets Global Variable 1 to “1” (the stock number for the polo shirt)

Small

SV2=S

This sets Global Variable 2 to “S” (for small)

Black

SV3=K

This sets Global Variable 3 to “K” (for Black)

To add the Small, Black Polo Shirt to the Sales Invoice, you would make a key that has the following macro –

SK – {GV1}

SK – .

SK – {GV2}

SK – {GV3}

SK – ENTER

QwikTouch replaces the {GVx} macros with the value you stored earlier, resulting in the following keys being sent to Keystroke –

SK – 1

SK - .

SK – S

SK – L

SK - ENTER

If you want to add the “Short Sleeve Cotton” shirt and all of its sizes and colors you only need to add 1 more key that sets Global Variable 1 to “2” (the stock number for the short sleeved short).

**Note – The SK-{GVx} macros must each be on their own line.**

In the example above, this would not work –

SK-{GV1}.{GV2}{GV3}ENTER