

# ***QwikTouch***

**Qwik Start Guide**



## Table of Contents

Table of Contents .....	2
System Requirements.....	3
Step 1 – Installation .....	4
Step 2 – Configuration .....	10
Standard Options.....	10
Keystroke Program Directory .....	10
Switches .....	10
Enable KeystrokePOS v6 Features .....	11
Template Size.....	12
Default Template .....	12
Advanced Options.....	13
Data Directory.....	13
Register Number .....	13
Generate .....	14
Launch After Setup.....	14
Save.....	14
Import Menu Line .....	15
License .....	15
Templates .....	15

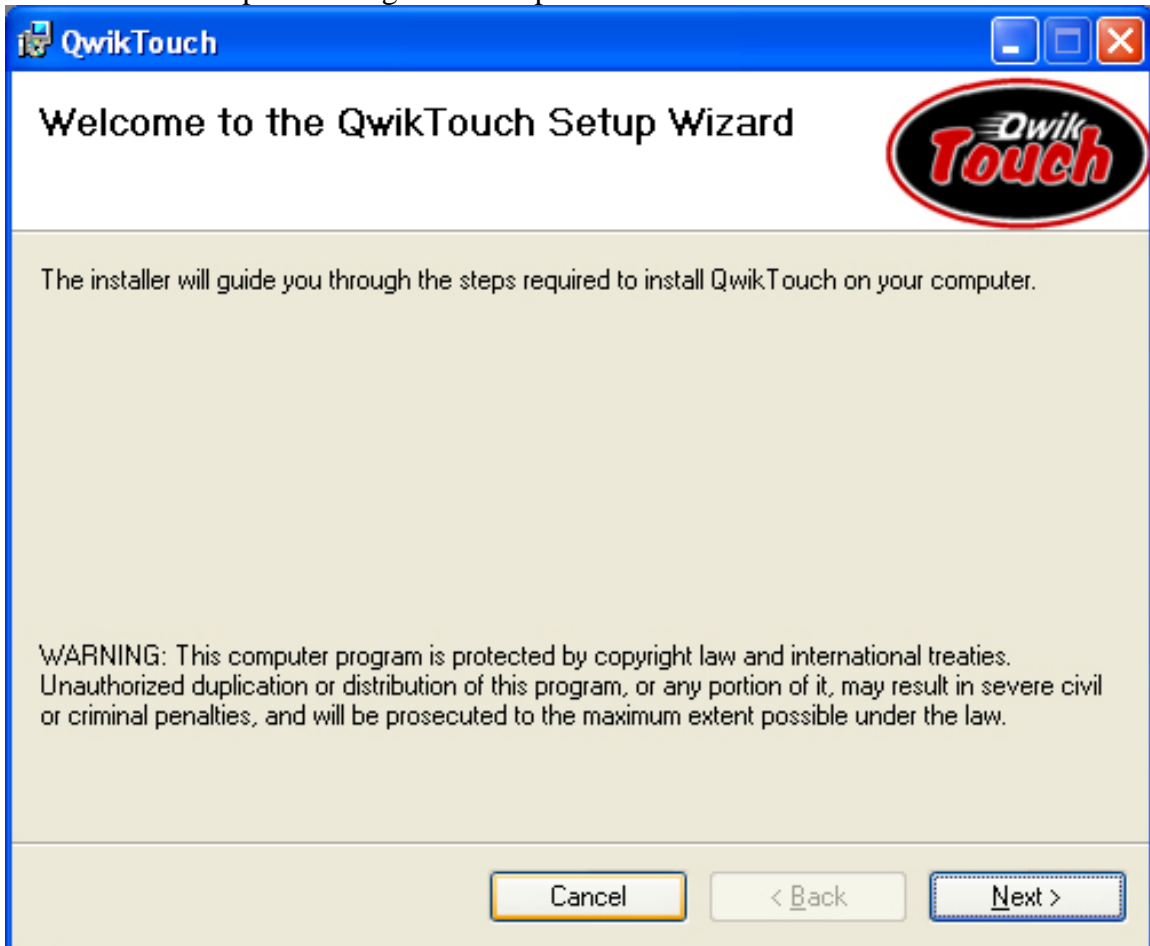
## System Requirements

- PC with 850 megahertz or higher processor clock speed recommended; 500 MHz minimum required (single or dual processor system);\* Intel Pentium/Celeron family, or AMD K6/Athlon/Duron family, or compatible processor recommended
- 256 megabytes (MB) of RAM or higher recommended (128 MB minimum supported; may limit performance and some features)
- 3 megabytes (MB) of available hard disk space\*
- Super VGA (800 x 600) or higher-resolution video adapter and monitor
- Microsoft .NET Framework 1.1
- Keystroke Classic (Windows Version) or Keystroke POS
- Touch Screen Monitor (Recommended)

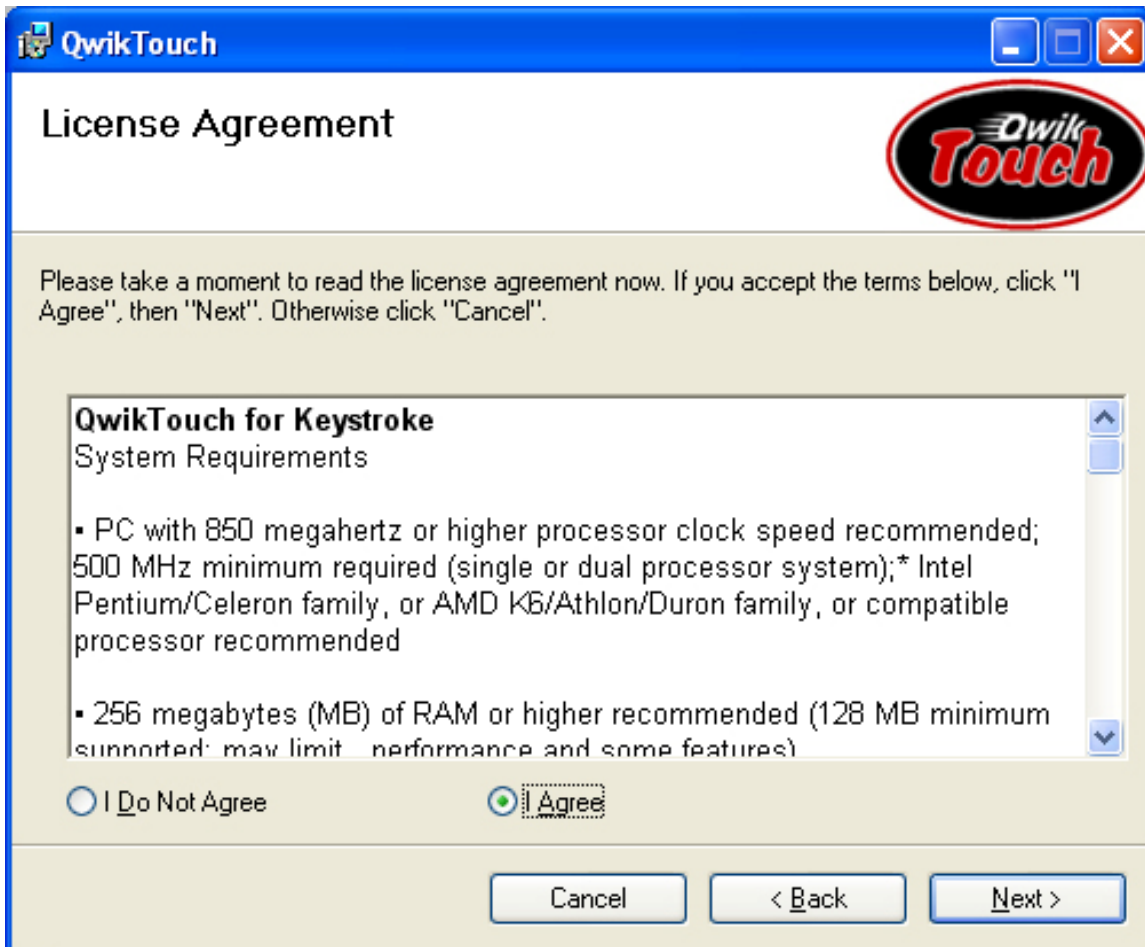
\* *Does not include space required by Microsoft.NET Framework*

## Step 1 – Installation

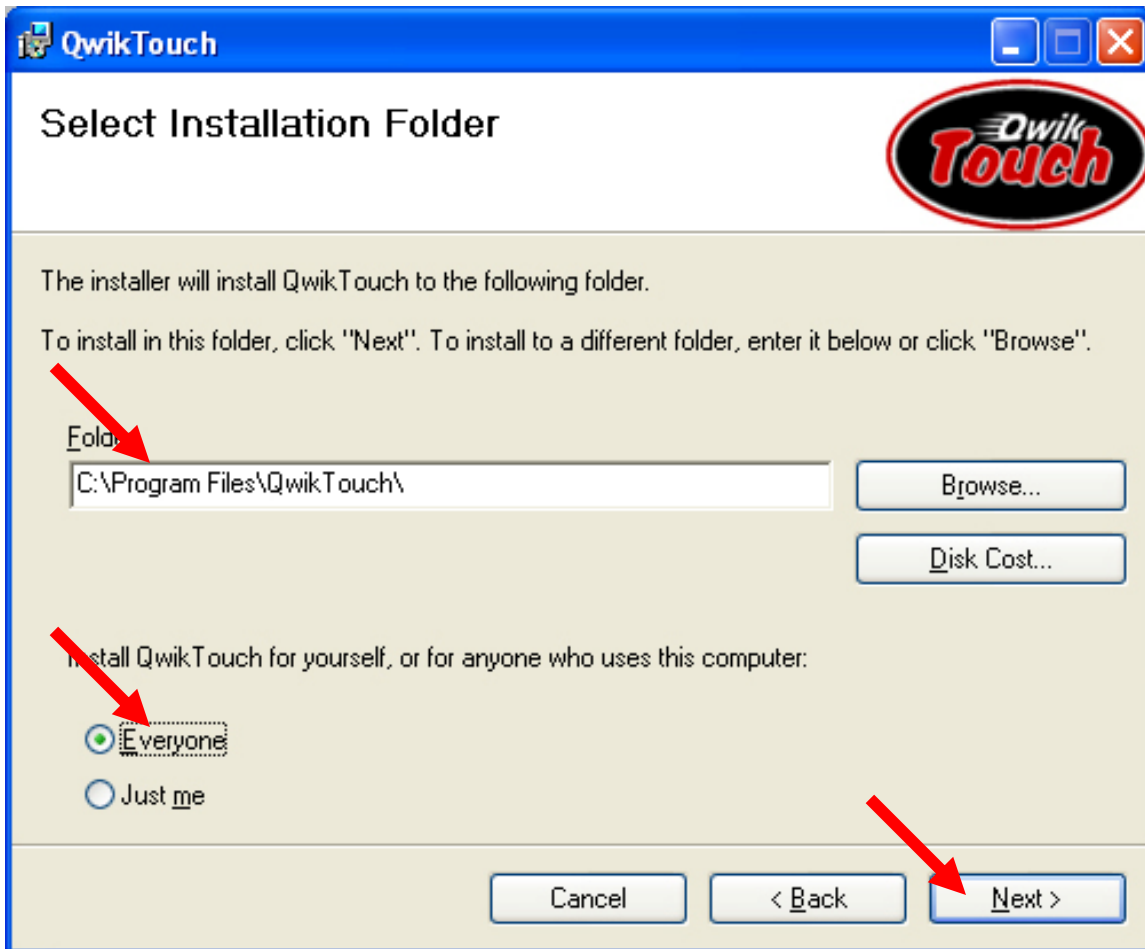
Double Click Setup.exe to begin the Setup Process



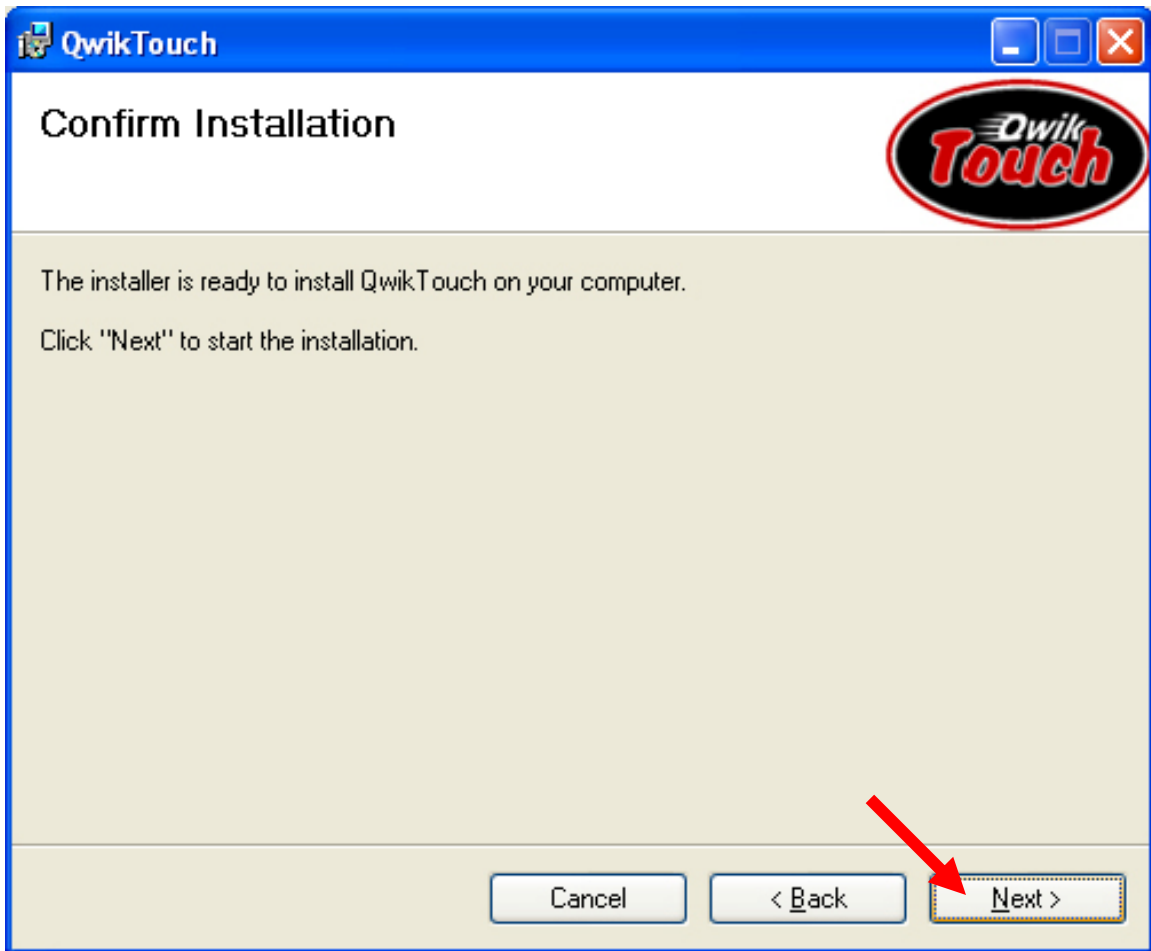
Choose next on the opening screen



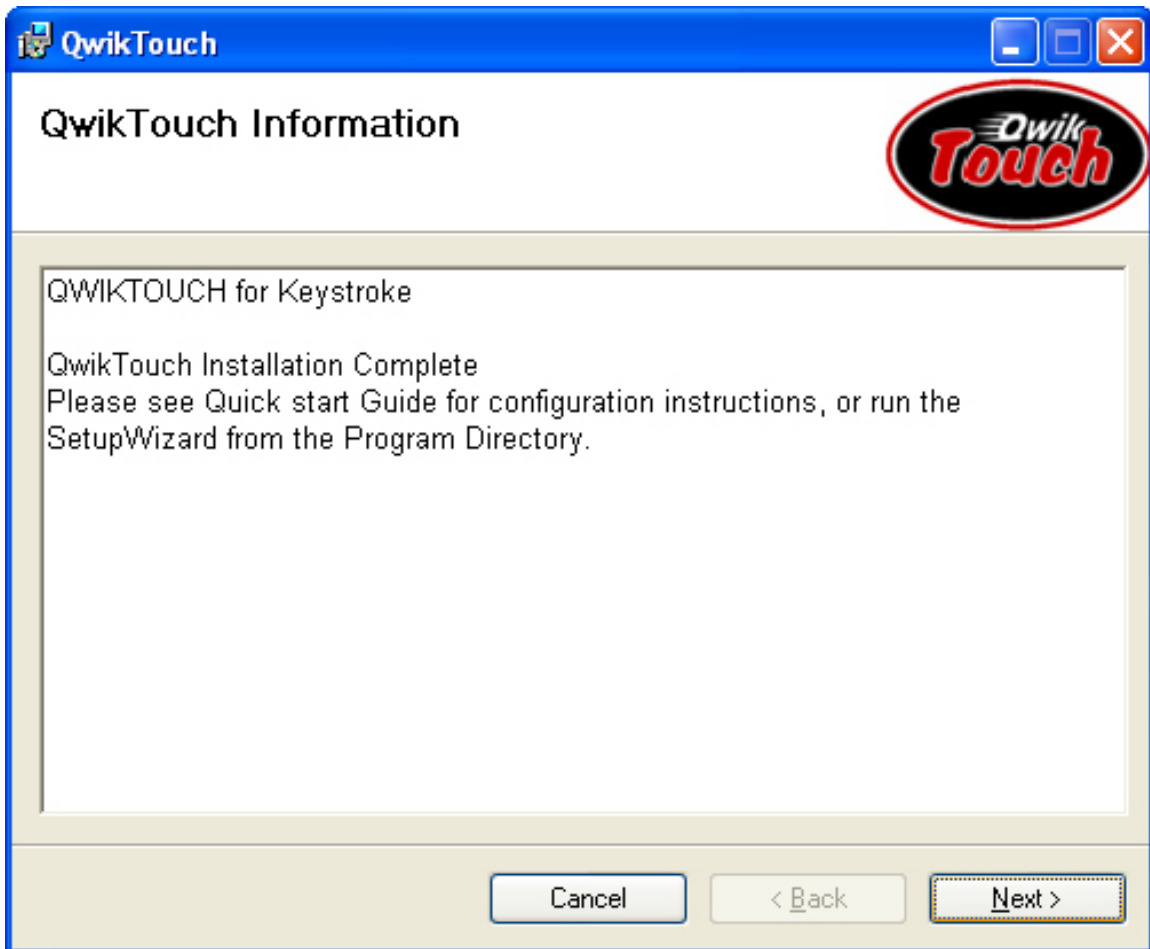
After reading the license agreement and system requirements, choose "I Agree" and choose next to continue



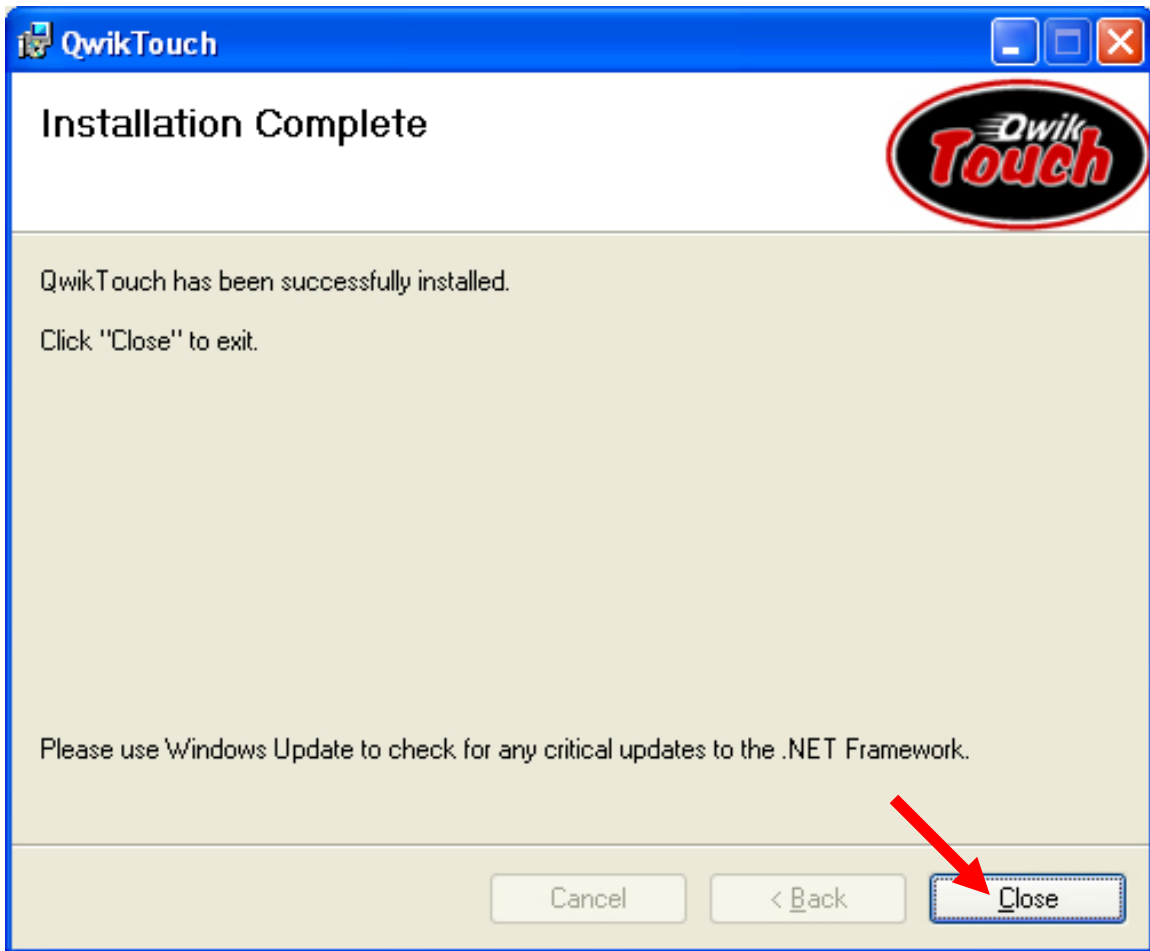
**Choose Installation Folder and Install Method (Everyone/Just Me) and choose next**  
(Note – Choose **Everyone** if more than the currently logged on user will be running QwikTouch)



**Choose next to begin the installation**



After reviewing the QwikTouch information screen, choose next to continue



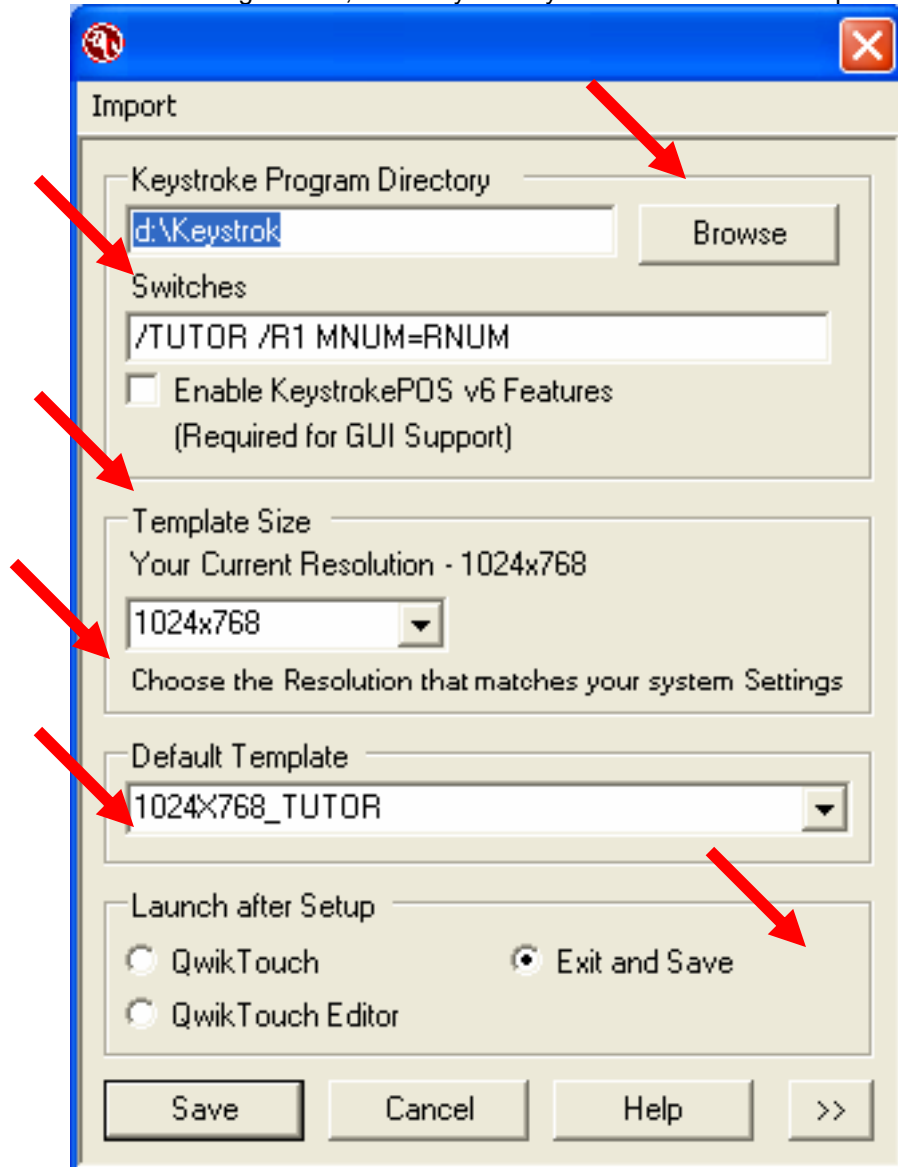
**Choose close after setup has completed**

## Step 2 – Configuration

### ***Standard Options***

To launch the Setup Program, choose –  
**Start – All Programs – QwikTouch – Setup Wizard**

On the following Screen, choose your Keystroke and Default Template Information



### **Keystroke Program Directory**

- Choose Browse, and locate your Keystroke Program Directory

### **Switches**

- Enter any Keystroke Switches you require
- In the Demo Version the switches are pre-configured and cannot be modified

## **Enable KeystrokePOS v6 Features**

- This option enables Keystroke Version 6.0 features
  - GUI Mode Support
  - The Change Module Feature
- Requirements
  - KeystrokePOS Version 6.0 or above
  - Register Switch
  - MNUM=RNUM Switch
  - Data Directory Switch
- Templates created using v6.0 features are not backwards compatible with non v6 templates.
- This Option is required for GUI Mode Support

## **Template Size**

- Choose the Template Size that best fits your monitor screen resolution
- Note – This option is used only to determine WS.INI Settings, and does not limit the available default templates.

## **Default Template**

- Choose the template that will be started when QwikTouch is launched
- In the Demo Version this is pre-configured and cannot be modified

## Advanced Options

Import

Keystroke Program Directory  
d:\Keystrok Browse

Switches  
/TUTOR /R1 MNUM=RNUM  
 Enable KeystrokePOS v6 Features  
(Required for GUI Support)

Template Size  
Your Current Resolution - 1024x768  
1024x768  
Choose the Resolution that matches your system Settings

Default Template  
1024x768\_TUTOR

Launch after Setup  
 QwikTouch  Exit and Save  
 QwikTouch Editor

WS INI  
Data Directory (e.g. DATA)  
TUTOR  
Register Number:  
Add Remove  
1

Save Cancel Help << >> Generate

Display the Advanced Options by choosing the  Icon from the Standard Options Screen

- Note – In the Demo Version, the Advanced Options are not available

The Advanced Options allow you to automatically generate WS.INI files to set your Keystroke Screen Size and Image Window size to match your QwikTouch Screen Resolution

*\* For the Default Templates only*

### Data Directory

- Type the name of your Keystroke Data Directory
- Should match data switches from Standard Options
- SetupWizard will attempt to determine the data directory from your Keystroke Switches (e.g. /D DATA)

### Register Number

- For each register you wish to generate an INI file for, type the register number, and choose add
- SetupWizard will attempt to determine the register number from your Keystroke Switches (e.g. /R1)

## **Generate**

- Choose Generate to create the WSx.INI files

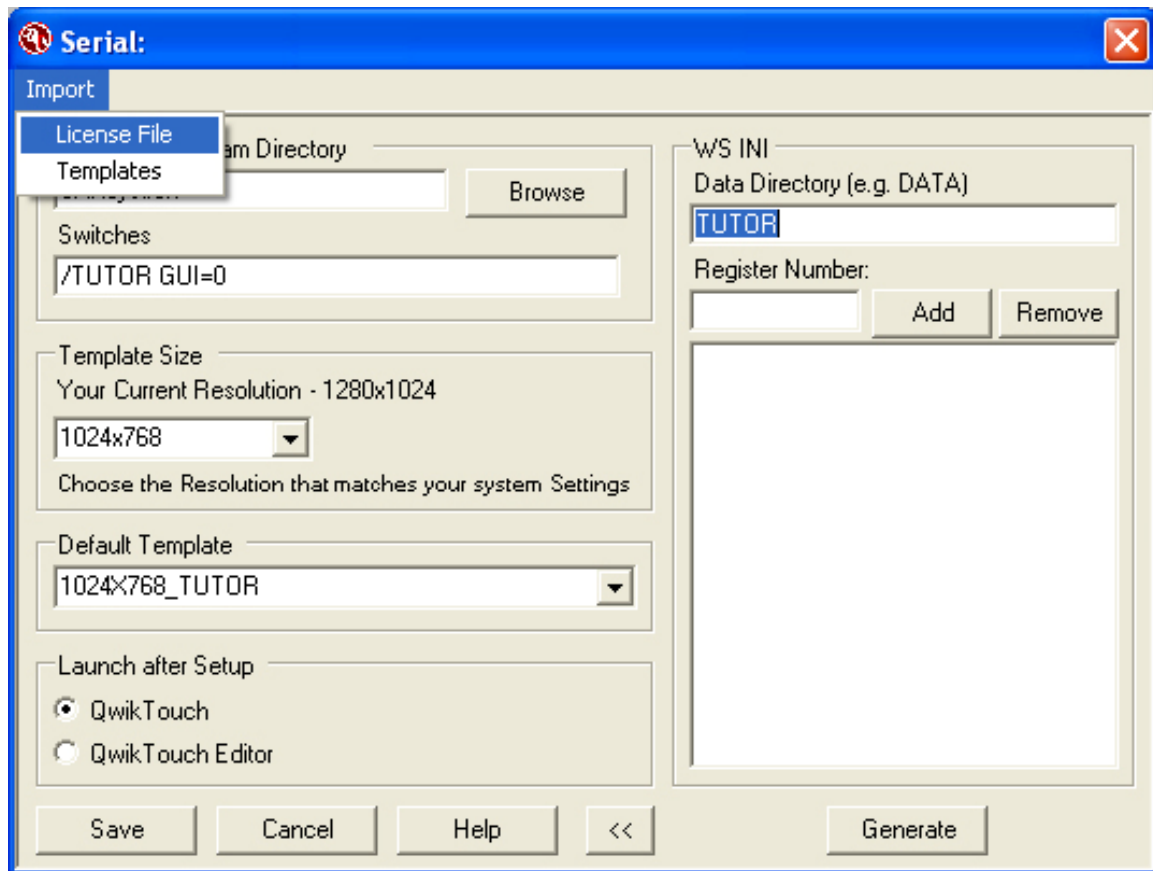
## **Launch After Setup**

- Choose the “QwikTouch” to launch QwikTouch after setup is complete
- Choose the “QwikTouch Editor” to launch QwikTouch Editor after setup is complete
- Choose the “Exit and Save” to save and exit the Setup Wizard

## **Save**

- Choose to save changes and perform the selected “Launch after Setup” action.

## Import Menu Line



### License

- Browse for your QwikTouch License file
  - Imports License.lic into your QwikTouch Program directory

### Templates

- Browse for QwikTouch Templates
  - Imports all selected templates into your QwikTouch templates directory

## CREATIVE RETAIL TECHNOLOGIES

425 South Bowen #2 · Longmont CO, 80501

Home of

The logo for QwikTouch features the word "QwikTouch" in a bold, italicized, black sans-serif font. To the left of the "Q" is a stylized graphic consisting of three horizontal lines of varying lengths, creating a sense of motion or speed.

303-776-0595 • 1-800-273-2736

<http://www.qwiktouch.com>